

Recognition Server™ 2.0

High-Volume, Automated OCR and Conversion for e-Discovery, Contract Management and Archiving



ABBYY Recognition Server 2.0 automatically converts large volumes of paper documents or document images into fully searchable electronic text for demanding e-discovery, archiving and business process automation solutions. This scalable, robust, server-based solution can be installed and running in minutes as a standalone application or it may be easily integrated within departmental or distributed enterprise solutions as a Web service or COM component. Recognition Server 2.0 leverages ABBYY's 20 years of global recognition leadership and extends it with the additional reliability, performance, flexibility, quality assurance and administrative capabilities that are essential to a mission-critical, distributed enterprise application.

Automated, Server-based OCR

High-performance OCR that automatically recognizes the document images it receives. Processes unattended in the background and can be scheduled to run at night to minimize impact on computer and network performance.

Scalability

Recognition Server can grow with your needs at any time. Simply add more computers and processors. The product automatically load balances among available resources to maximize throughput.

Broadest Language Support

Recognition Server can recognize up to 200 languages. Perfect for today's global enterprise.

SOA Compatible

Web services API can OCR-enable centralized or distributed applications. VARs or ISVs can use the API to integrate Recognition Server with their own loosely coupled applications. COM-based API is also included.

Drag-and-Drop Input

Simply drop input files into a watched folder and Recognition Server does the rest.

Email Output

When it's finished, Recognition Server will email editable files back to the sender or a distribution list for further editing and collaboration.

SharePoint Integration

Outputs directly into the Microsoft SharePoint Server content management library. Specifies libraries, folders and output formats within Recognition Server.

Document Separation

Separates documents with bar codes, blank pages, sub-folders or number of pages.

Litigation Support and e-Discovery

Supports Bates Numbering. Imprints unique identifier on each document.

Workflows

Automate steps that occur in the processing of documents; includes input method and source, recognition options, proofing and correction choices, output formats, scheduling and many other parameters. Workflows are set up in the Administration Console.

Jobs

Jobs are units of processing that can contain one or more documents and the processing parameters of a particular workflow. A Recognition Server API or an XML Ticket file can override the workflow parameters.

Product Benefits

Accuracy.

ABBYY has put 20 years of recognition experience into Recognition Server. Billions of documents have been recognized using ABBYY technology.

Fast.

Rapidly convert large jobs for litigation support, insurance or job-based applications. Can easily scale by adding Processing Stations or CPUs.

Cost-Effective.

Reduces cost per page.

Searchable.

Turns paper into fully searchable information.

Efficient.

Leverages existing computing resources by processing jobs overnight and load-balancing its operation.

Secure.

Robust architecture protects critical documents from loss during processing.

Accessible.

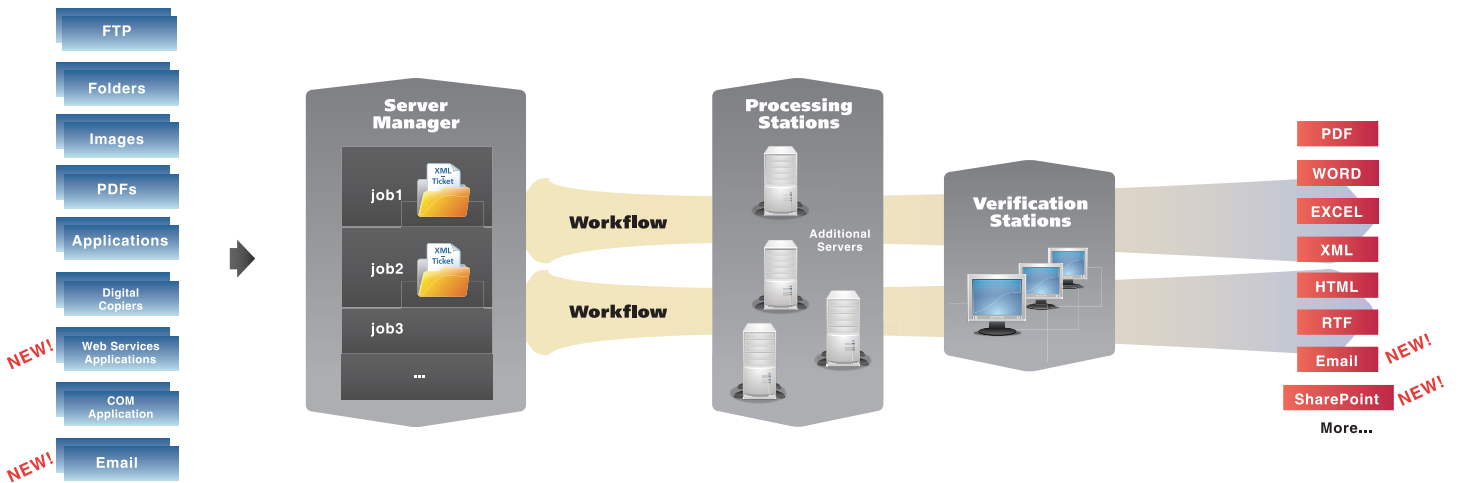
Enables easy, one-step, remote access to OCR services by email and networked MFP support.

Manageable.

Centrally managed; installs in minutes.

How ABBYY Recognition Server Works

Recognition Server 2.0 handles input image documents as jobs which are processed according to workflows.



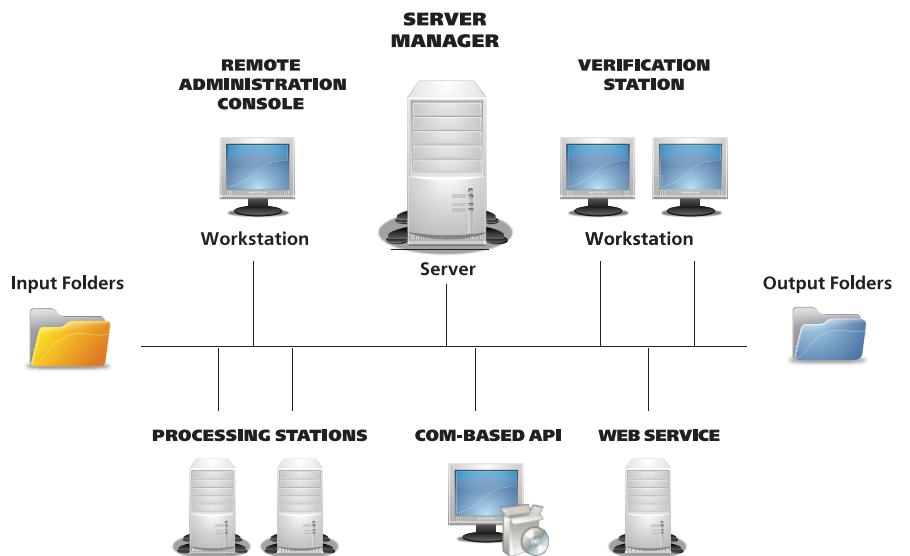
The following components comprise ABBYY Recognition Server 2.0:

Server Manager

Manages the workflow among modules. Handles all requests, maintains processing options and distributes recognition and conversion jobs among processing stations to maximize throughput.

Processing Station

Performs OCR and document conversion. Receives jobs from the Server Manager. Recognition Server scales easily by adding processing stations (PCs) or assigning additional CPUs.

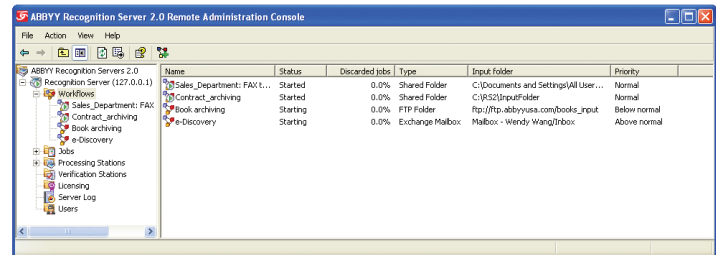


Recognition Server Components

Remote Administration Console

Based on the Microsoft Management Console (MMC), provides a common administration interface for configuration and monitoring of the system. It can be installed with the Server Manager or on a separate workstation. Workflows and jobs are defined here.

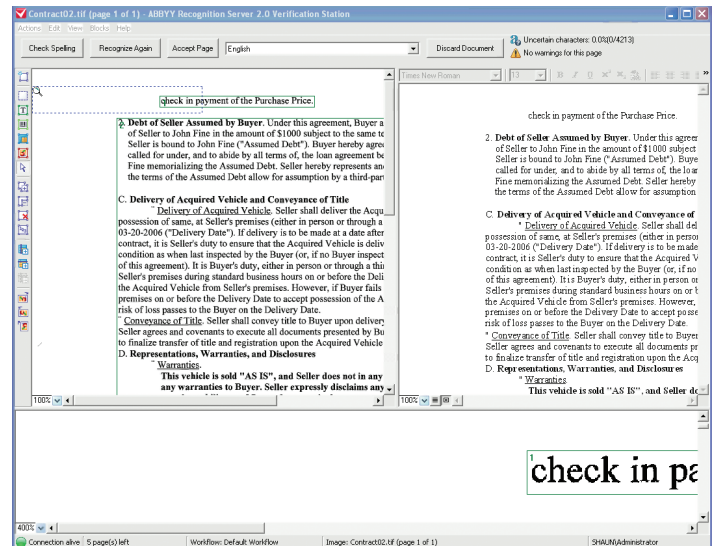
Recognition Server's Remote Administration Console enables IT administrators to configure all Recognition Server components and workflow, no matter where they are.



Remote Administration Console

New! Verification Station

This new module allows operators to view the document image and the recognition results side-by-side and correct any error, or reject the document. A user is able to view the original document image beside the recognition results, then correct any errors to ensure that conversions are accurate before they are saved.



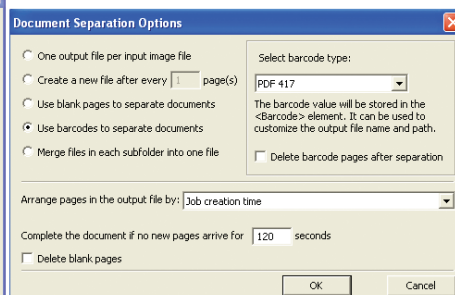
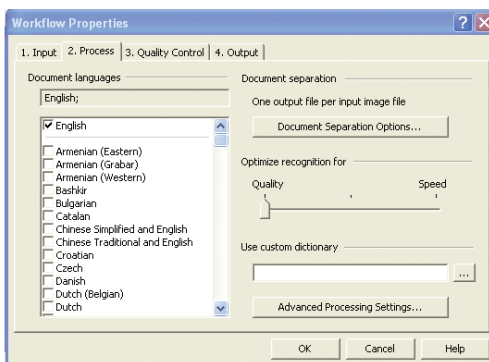
Verification Station

Web Services API

Enables integration with Service-Oriented Architecture (SOA) applications – including remote applications – over the HTTP protocol. The API allows other applications to pass jobs to Recognition Server and customize their parameters.

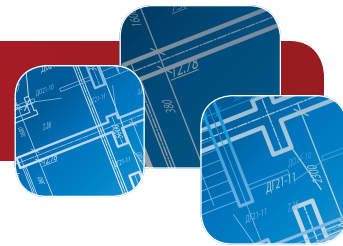
COM-based API

Enables users to access Recognition Server functions from within external applications (e.g. ECM systems), linking the product to third-party workflows. Can also be used to override processing settings to automate and customize jobs.



A workflow defines how Recognition Server processes documents. For example, a particular application may value the highest accuracy over the fastest possible speed. These and many other parameters are selected in a workflow. Document separation is another new feature. It literally determines when a document ends and another begins. A workflow can use bar codes, blank pages or several other methods to do this.

Specifications



System Requirements

Server Manager

- PC with 500 MHz or higher CPU
- Operating System: Microsoft® Windows® Server 2008, Windows Vista®, Windows Server 2003, Windows XP, Windows 2000
- The account which is used by Recognition Server must have read/write permissions to the following registry branches:
 - HKEY_CLASSES_ROOT
 - HEKY_LOCAL_MACHINE\Software\ABBYY
 - HEKY_CURRENT_USER\Software\ABBYY
- Memory: 128 MB RAM
- Hard disk space: 15 MB for installation and 100 MB for program operation*
- Microsoft.NET Framework 1.1 or later is required for saving files to Microsoft SharePoint Server.
- Microsoft Outlook or later is required for processing and sending email messages

Processing Station, Verification Station, Remote Administration Console, COM API, Web Services API

- PC with 500 MHz or higher CPU
- Operating System: Microsoft Windows Server 2008, Windows Vista®, Windows Server 2003, Windows XP, Windows 2000
- Memory: 128 MB RAM plus an additional 100 MB for each recognition process
- Hard disk space: 250 MB each for installation and 100 MB for operation of each Processing or Verification Station*

Additional Remote Administration Console

- Microsoft .NET Framework 1.1 or later is required for saving files to Microsoft SharePoint Server

Additional Web Service API

- Microsoft Internet Information Services (IIS) 5.1 or later
- Microsoft .NET Framework 1.1 or later

* Note: The hard disk space required for program operation may be larger depending on the complexity, quality and number of images.

Recognition Languages

A total of 191 languages are supported. Version 2.0 adds Thai.

37 languages with dictionary support: Armenian (Eastern, Western, Grabar), Bashkir, Bulgarian, Catalan, Chinese Simplified, Chinese Traditional, Croatian, Czech, Danish, Dutch (Netherlands and Belgium), English, Estonian, Finnish, French, German (new and old spelling), Greek, Hebrew, Hungarian, Italian, Indonesian, Japanese, Korean, Latvian, Lithuanian, Norwegian (Nynorsk and Bokmal), Polish, Portuguese (Portugal and Brazil), Romanian, Russian, Slovak, Slovenian, Spanish, Swedish, Tatar, Turkish, Ukrainian

133 additional languages without dictionary support: Visit www.ABBYY.com for complete list.

Interface Languages

English

Supported Barcode Types

1D: Check Code 39, Check Interleaved 25, Code 128, Code 39, EAN 13, EAN 8, Interleaved 25, CODBAR (without checksum), UCC Code 128, Code 2 of 5 (Industrial, IATA, Matrix), Code 93, UPC-A, UPC-E, Postnet. 2D: PDF 417

Supported Input Formats

PDF: v.1.7 and earlier, BMP: black and white, grayscale, color; PCX/ DCX, black and white, grayscale, color; JPEG/ JPEG 2000, grayscale, color; TIFF, single and multi-page, Group 3, Group 4, ZIP, LZW, grayscale, color; PNG, black and white, grayscale, color; DjVu

Supported Output Formats

Version 2.0 now supports the PDF/A archival formats and Microsoft Office 2007's XML based formats. Full list: PDF, v.1.6 and earlier, PDF/A-1b and PDF/A-1a, based on PDF v.1.4; Microsoft Office: DOCX, XLSX, (Office 2007 XML), DOC, XLS, RTF; HTML, 3.2/4.0 (by default 4.0); TXT, Code pages: Windows, DOS, Mac, ISO, and Unicode TXT (UTF-8, UTF-16); CSV, Code pages: Windows, DOS, Mac, ISO, and Unicode TXT (UTF-8, UTF-16); Native XML, Native XML is an XML format developed by ABBYY; TIFF, JPEG, JPEG 2000; FineReader internal format, Image plus layout

Pricing

ABBYY offers three pricing options for Recognition Server:

1. Total Page Count (Non-renewable)
2. Total Pages Per Year (Renewable)
3. Core-Based (Renewable): Dual-core and quad-core are available. Buyers may process any number of pages with this type of license.

Additional annual maintenance fee will apply to renewable models.

Available add-on modules include: Chinese, Japanese and Korean Recognition, Thai Recognition, Hebrew OCR, FineReader XIX, Export to XML, Additional Verification Stations.

ABBYY offers flexible pricing packages for every business. Contact ABBYY for more information.

Trial Version

ABBYY offers a fully functional trial version. Contact ABBYY to request your trialware.

ABBYY USA
880 North McCarthy Blvd., Suite #220
Milpitas, CA 95035, USA
Tel +1.866.463.7689
Fax +1.408.457.9778
sales@abbyyusa.com

www.ABBYY.com

ABBYY®