

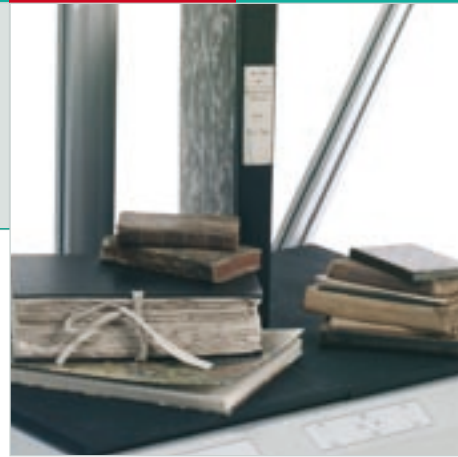
Bookeye[®] 3

A1 Book Scanners



High quality production systems

Made in Germany



The principle of scanning historic books, valuable manuscripts, stapled documents, color drawings and maps without causing damage has been optimised and refined with the new generation of **Bookeye®** overhead scanners.

The scanner developed and produced in Germany combines state of the art scanning lenses, high-quality CCD image sensors and white LED light, bundled in a movable continuous light strip, which follows the scanning process.

Bookeye® 3 meets individual requirements. This scanning resolution equips you to digitise many different types of originals. **Bookeye® 3** is available either as color or as grayscale unit.





HIGHLIGHTS

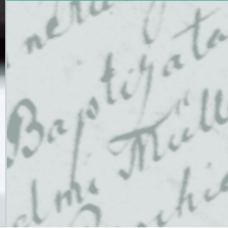
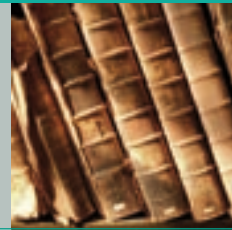
- A1 oversize
- high resolution (300 x 400 dpi)
- rapid scanning
- integrated book cradle
- LED lamps
- laser-assisted profile detection
- 1 GBit network interface (TCP/IP)



aptes
ebenen
mit Sa
g also
tag dage
tag dage
also der
Tag (Sa
ür



Integrated book cradle



FEATURES

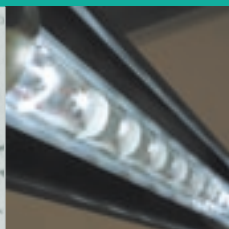
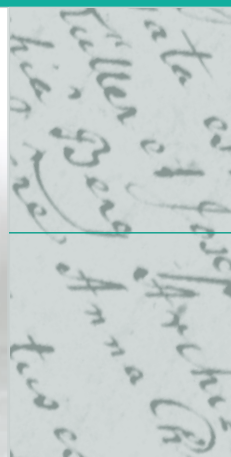
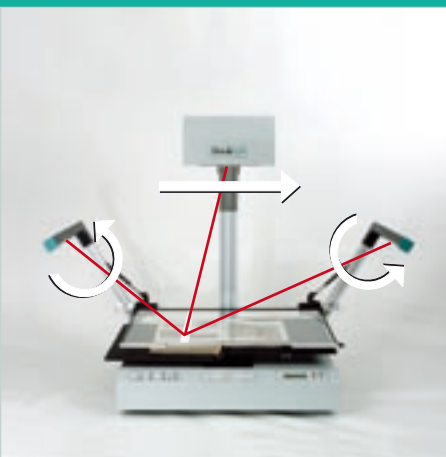
- oversize originals larger than A1 format
- precise LINOS Rodenstock scanning lens
- high-resolution CCD image sensors
- autofocus / automatic format recognition
- focused, glare-free continuous light strip due to High Power White LED during the scanning process
- 100 % UV- and IR-free light
- ergonomic optimisation due to dimmable lamps
- service life of lamp over 20,000 hours
- integrated motorised book cradle with 100 mm lift
- variable adjustment to width of spine
- wooden contact surface for scanning without damage to original
- optional glass plate
- BCS-2® capturing software with the following functions:
 - page separation
 - indexing
 - multi-masking
 - cutting
 - skew / despeckle
 - bookfold correction
 - e-mail connection
 - PDF conversion
 - Web publishing
 - OCR
- Output formats:
 - TIFF G4, JPEG, PNG, TIFF, PDF, Multipage TIFF, ZIP, PCX, BMP, GIF



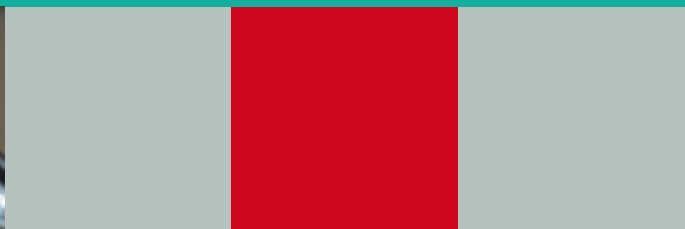
Additional book holder



Bookeye® 3 with Mando furniture



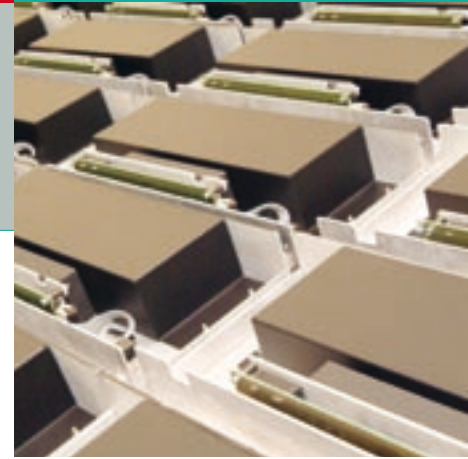
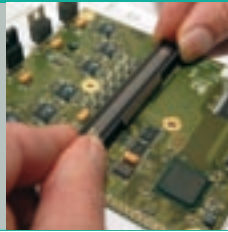
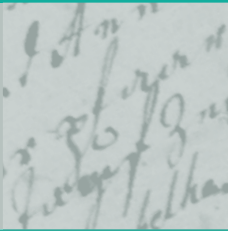
LED lamps



Rotating lamps synchronised with the camera

TECHNICAL DATA

Product	Article number
Bookeye® 3 A1 GS (grayscale)	BE3-SYSGS-R1
Bookeye® 3 A1 Color	BE3-SYSCL-R1
Device data	
dimensions in H x W x D in mm	1,200 x 1,460 x 770 (with lamp arms)
	1,200 x 900 x 770 (without lamp arms)
weight without packaging in kg	approx. 60
electrical connection	
<ul style="list-style-type: none"> voltage 	100-240 V
<ul style="list-style-type: none"> frequency 	50-60 Hz
<ul style="list-style-type: none"> output 	50 VA standby / 150 VA operating
<ul style="list-style-type: none"> lamps 	LUXEON white LED approx. 5,000 LUX continuous light strip
Format of originals	
maximum W x D in mm	900 x 635
	(> A1)
Scanning	
resolution in dpi	200, 300, 400 , 600
scanning time in sec	10 for A1 format
color depth for Color (intern / extern)	36 bit / 24 bit
color depth for GS (intern / extern)	1,024 / 256 grayscales
interface/protocol	1,000 MBit network / TCP/IP
software	BCS-2*
Accessories	
	Article number
glass plate	BE3-BC-A1KA
additional keyboard	BE-KB-001
foot switch	BE-FS-01
copy card reader	on request
book holder	BE3-BC-RL/BE3-BC-VO
Mando furniture	MADR-BI-RAL-9006



glass plate

BCS-2®



book holder (right/left)

MyBib eDoc®



additional keyboard



book holder (front)

Bookeye®



Mando furniture

C-3



ImageWare

ImageWare Components GmbH
Am Hofgarten 20

53113 Bonn
Germany

Tel.: + 49 - 228 / 969 85 - 0
Fax: + 49 - 228 / 969 85 - 84

E-Mail: bookeye@imageware.de
www.bookeye.com